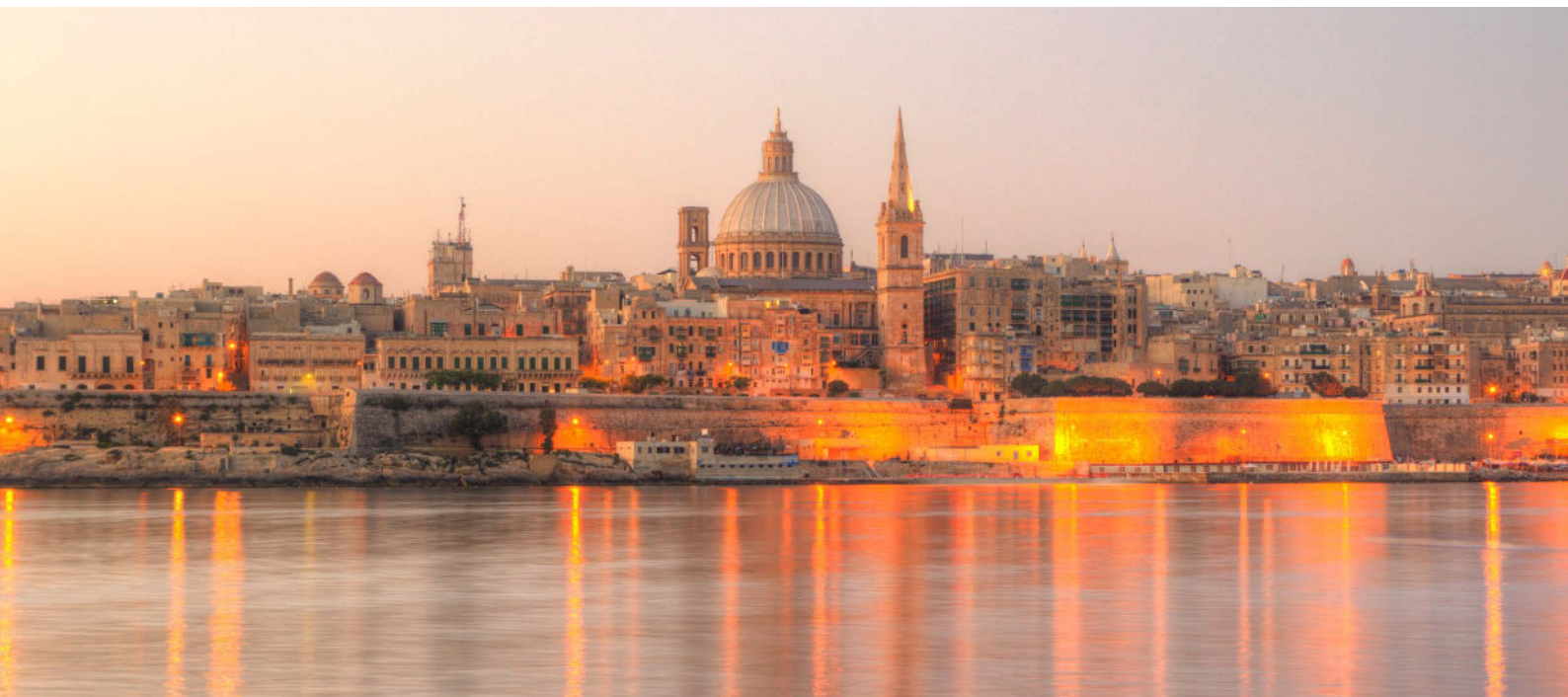




Course Guide 2024

Crossing Language Barriers



CONTENTS

01 inlingua Malta

03 Why choose inlingua Malta?

05 Level Progression Chart

06 my.inlingua & Mini- Stay Programmes

07 my.inlingua Online Courses

08 Learning in a Group

10 Parent & Child Programme

11 Learning One-to-One - Combined Packages

12 Summer Teen Programme

14 Study Travel Groups

15 Academic Pathway Programmes

16 Exam Preparation Courses

18 Cambridge Exam Dates 2024

19 Long Stay Programmes

20 Long Stay Programmes

21 Smart Study Programmes

23 Accommodation

31 Social Activity Programmes & Airport Transfers

32 Take Note

33 Terms & Conditions

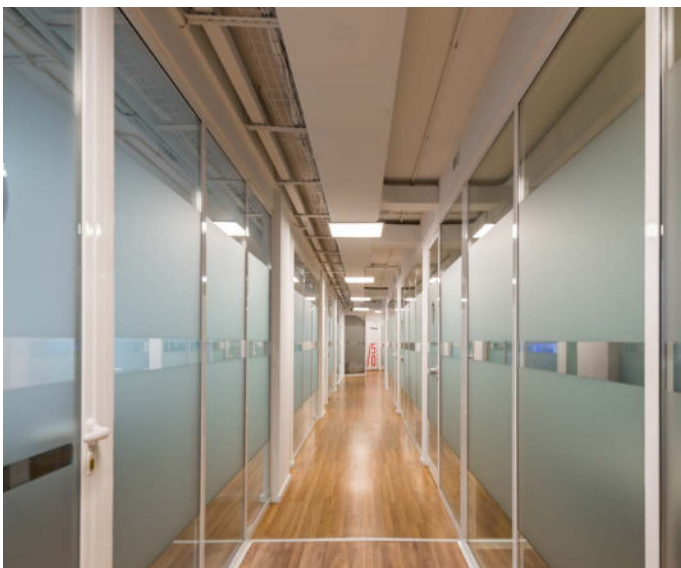
inlingua Malta

Malta is the home of everything British mixed with the Mediterranean charm of the Maltese Islands – a perfect fun-filled destination to learn English.

inlingua Malta is located in Sliema, Malta's most vibrant tourist destination! You can improve your English in one great location connected to all of Malta's main attractions and interesting locations. The school has 20 bright and comfortable high-tech classrooms, a student lounge, self-learning study rooms with materials and computers access as well as a student relaxation area close to reception. Free wifi is available throughout the school.

Our Facilities

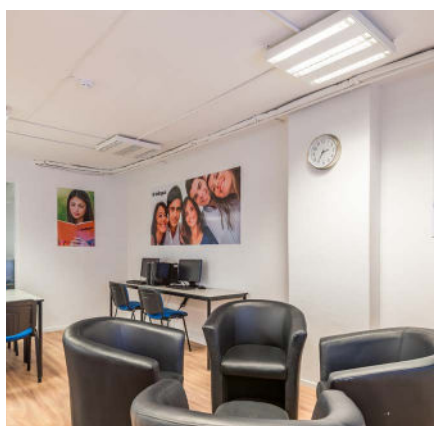
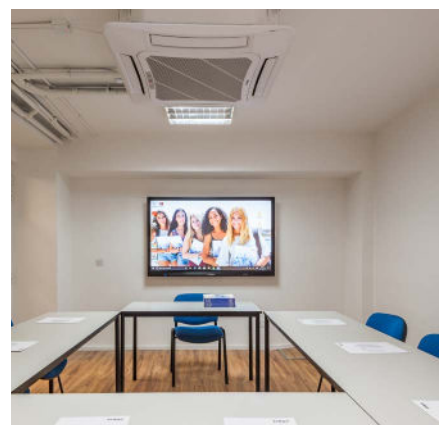
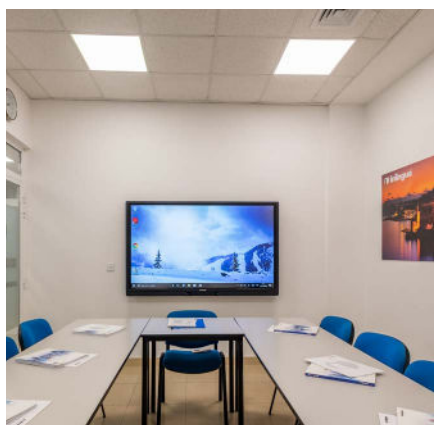
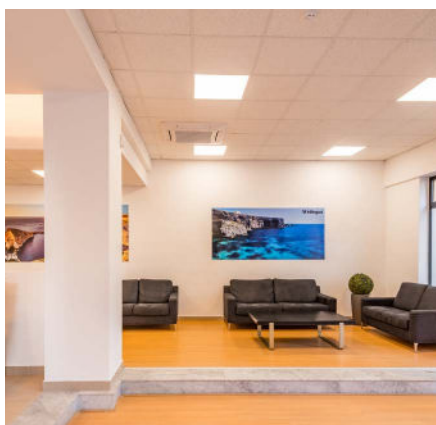
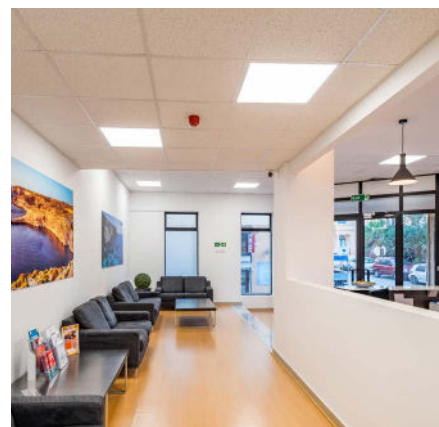
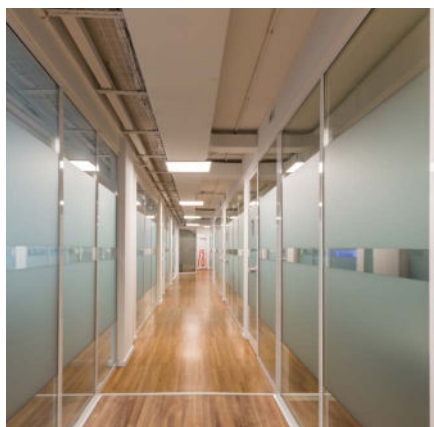
- 20 air-conditioned classrooms all with interactive flat panels
- Student lounge
- Study area
- Wireless internet access
- ISO Certified - Quality assured
- FELTOM Accredited
- Authorised Cambridge Exam Centre
- Fully Accessible



One great location!

Our Sliema location is situated at the heart of the vibrant tourist area, offering easy access to cafes, restaurants, retail outlets, and leisure options. Learners will enjoy convenient access to various amenities and entertainment.

Furthermore, our strategic location provides an excellent starting point for exploring Malta. A short 7 minute ferry ride takes you to Valletta, the capital city with its rich history and cultural attractions. Additionally, inlingua Malta benefits from direct transport routes to Malta's iconic landmarks, ensuring convenience for exploring historical sites, beautiful beaches, and the lively local culture. In summary, our prime Sliema location guarantees a seamless and enjoyable travel experience, allowing guests to fully embrace their visit to Malta



Why choose inlingua Malta?

We are proud members of inlingua international, a renowned institution with over 50 years of expertise in delivering impactful language education. Being part of the largest network of privately- owned language schools, inlingua operates across 30 countries with 200 language centers globally.

Experience

inlingua Malta is the first language school on the island of Malta, established in 1980 and backed by 44 years of experience, we are trend setters in Malta's ELT industry! Our trainers are well experienced in teaching (Cambridge CELTA or DELTA qualified) and come from diverse backgrounds creating a pool of knowledge which is not restricted to language learning or linguistics. A number of our trainers have professional business experience and qualifications and understand the diverse linguistic needs of each student. Therefore, we can offer a tailor-made approach for every student to help them reach their goals.

Quality not quantity

We offer a personalized service where teaching standards are not compromised by quality and price. inlingua Malta is accredited by FELTOM and ISO21001, meaning our courses and the overall organization, is recognized as being of the highest standard. We have a strong international reputation for providing high quality language courses in a welcoming and professional atmosphere!

The inlingua Method

The inlingua Method is one of the key elements that contribute to learning success. It is based on decades of experience in language training and is continuously evolving to match the needs of a changing world. The three components of the inlingua method are:



Communication First



inlingua Learning Materials



Native Speaking Language Training

Continuous Worldwide Learning

Carry on learning online or at another center in your area using the same course book! With my.inlingua.com the possibilities are infinite. Online course work will supplement your lessons whilst face-to-face virtual classrooms will ensure that your learning does not stop! This blended learning experience can be tailored to create the optimal fit for the student looking for flexibility in their learning.



Material & Services



Print

inlingua Course Books are designed as support material for language training sessions. They are adapted to suit the level, language structure, vocabulary and topic of the learner's choice.



Online Test

inlingua offers free online language placement testing. The test can be taken at any time online, and it is non-binding. If you wish, your results can be sent directly to your center of choice.



my.inlingua Online Learning

my.inlingua provides the opportunity to choose a customized learning path which meets individual needs and enables learners to continue learning outside the classroom.



Audio

Each course book has audio exercises in the training session or for private practice. All audios are available for download on the inlingua website.



Virtual Classroom

The virtual classroom enables learners to learn anywhere, at any time. Lessons take place online with a teacher, and only require stable internet access and a computer with integrated audio and webcam.



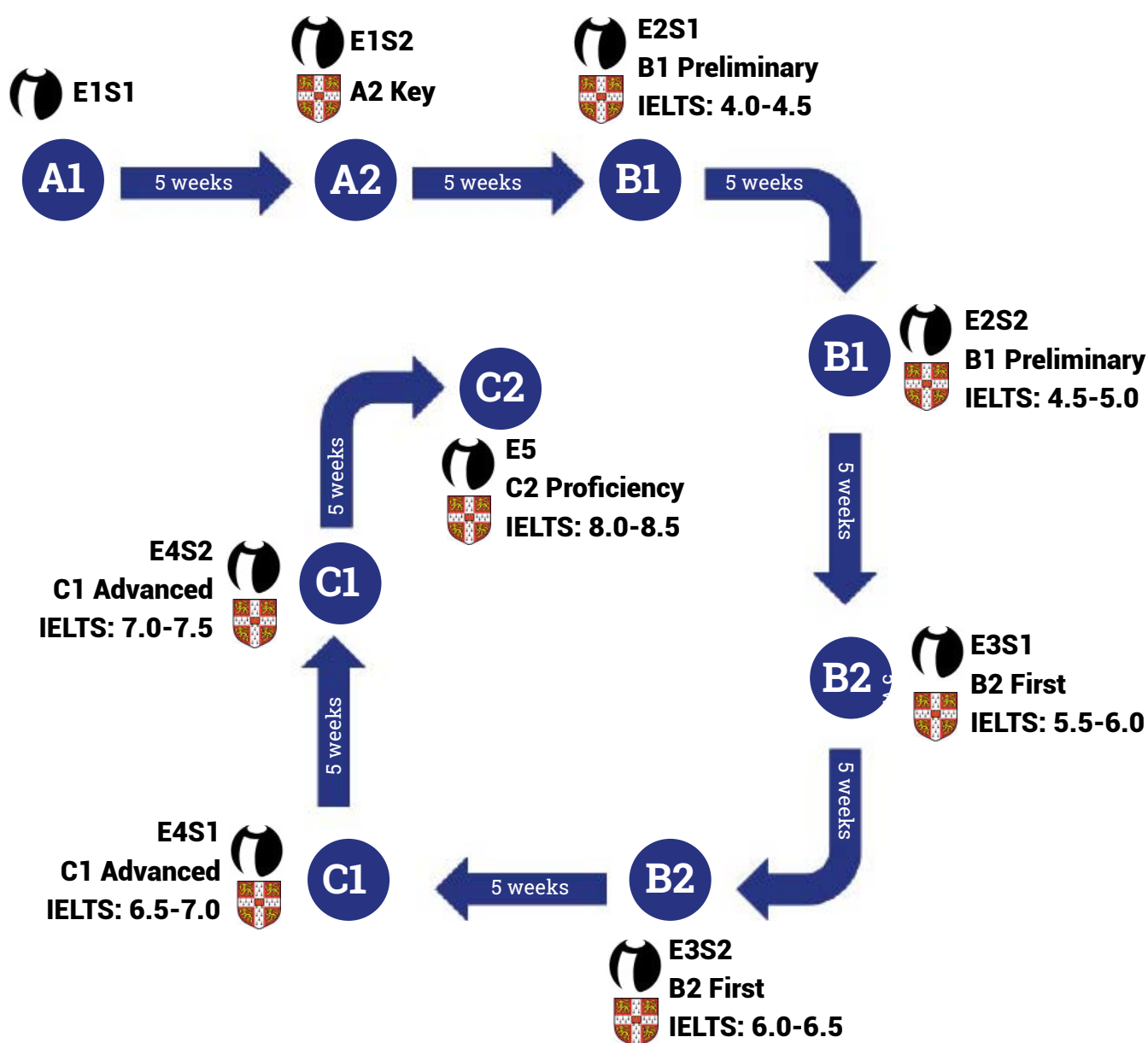
Blended Learning

Blended learning comprises the best of both worlds: in-class and online learning. The blended learning approach can be tailored to create the optimal fit for customers looking for flexibility in their learning.

Level Progression Chart

While we acknowledge that the learning process varies for each student, at inlingua Malta, we have established standardized study durations to provide students with an approximate timeframe for progressing from one proficiency level to another. Our General English programme comprises 9 distinctive levels, with each spanning a duration of 5 weeks.

Advancement from one level to the next is determined through a comprehensive evaluation test, assessing a range of essential skills, including vocabulary and English usage, writing, reading and speaking.



Outline of inlingua Malta levels and their equivalent references: Common European Framework, Cambridge English Scale and IELTS Score and time in number of weeks.

my.inlingua & Mini-Stay Courses



my.inlingua - inlingua Online Courses

inlingua provides students with the option of blending learning, allowing them to combine traditional in-person classroom instructions with online coursework that complements the inlingua course material and language objectives for each proficiency level. This approach can be particularly advantageous for individuals seeking to pursue their studies conveniently from their homes.

Tutor led Self-Study and Online Conversation Lessons

Our online learning tutor will assist you in completing your tailor-made coursework and will give you feedback on the work completed. After completing the online test and assigning an inlingua level, the tutor will assign the right coursework, whether covering the General English or the Business English course book. Learners will also have the opportunity to choose the time and topic for 10 conversation lessons of a 50 minute duration. Conducted by an inlingua International trainer correcting learners' spoken production of a maximum of 4 participants, these lessons are ideal for improving speaking skills and fluency.

COURSES	ACCESS DURATION	AREA OF STUDY	PRICE
my.inlingua - General English	3 months + 10 conversation lessons	General English	220
my.inlingua - Business English	3 months + 10 conversation lessons	Business English	220



Available at the following CEFR Levels:

Learning in a Group

English for Life

General English : 15 hours per week/ 3 hours per day

Our General English programme is designed to facilitate language acquisition and its practical application in students' daily routine. Our curriculum encourages the gradual improvement of language skills. While priority is given to oral proficiency to improve fluency, our course covers comprehensive aspects including English usage, reading, listening, writing and speaking.

Delivered over five days a week, from Monday to Friday, the course comprises a total of 20 lessons per week. Each lesson is thoughtfully designed to span 45 minutes, collectively totalling three hours of engaging instruction per day.

Intensive General English: 22.5 hours per week/ 4.5 hours per day

Unlock the power of language with Intensive General English! Elevate your language level with our dynamic General English Intensive program. Designed to accelerate your language acquisition, this course leverages the proven techniques of our General English curriculum, but in a turbo format. Dive deep into language mastery as you perfect fluency, proficiency and control in all facets of English communication.

Delivered over five days a week, from Monday to Friday, the course comprises a total of 30 lessons per week. Each lesson is thoughtfully designed to span 45 minutes, collectively totalling four and a half hours of engaging instruction per day.

Business English: 15 hours per week/ 3 hours per day

Our course is meticulously designed to equip students with the art of seamless communication within a professional setting. Immerse yourself in a comprehensive exploration of business-oriented topics, including meetings, email etiquette, negotiations and executive presentations. These are rigorous yet rewarding sessions that test and hone all aspects of your English proficiency, strategically aligned with the demands of the business world.

Delivered over five days a week, from Monday to Friday, the course comprises a total of 20 lessons per week. Each lesson is thoughtfully designed to span 45 minutes, collectively totalling three hours of engaging instruction per day.

Junior English (Age 5-12): 15 hours per week/ 3 hours per day

This course ingeniously combines education and fun. Taking advantage of Inlingua's abundant resources and our qualified and experienced educators, our young learners engage in age-appropriate, interactive learning. This dynamic approach covers a spectrum of skills, all taught through exciting games and activities.

Delivered over five days a week, from Monday to Friday, the course comprises a total of 20 lessons per week. Each lesson is thoughtfully designed to span 45 minutes, collectively totalling three hours of engaging instruction per day.

COURSES	HOURS PER WEEK	AGE	NO. OF STUDENTS IN CLASS	STANDARD	HIGH	*ONLINE LEARNING MY.INLINGUA.COM
General English	15	13+	12	230	270	220
Intensive General English	22.5	13+	12	285	340	220
General English Mini Group	15	13+	6	345	-	220
Intensive General English Mini Group	22.5	13+	6	430	-	220
Business English	15	18+	6	345	400	220
Junior English	15	5-12	10	250	305	-
Evening General English	9	18+	12	99	99	220

*Continue learning after your stay by including my.inlingua: 3 months activation with course work + 10 online conversation lessons for €220



C2
C1
B2
B1
A2
A1

Available at the following CEFR Levels:

Parent & Child Courses

Our junior courses offer tailored English lessons for children as young as 5 years old. To streamline the process for families, parents can conveniently book group courses of 20 lessons simultaneously with their kids. This setup ensures a smooth experience while providing both children and parents with English language education, fostering a supportive atmosphere where learning is shared.

Our program emphasizes a cohesive learning environment by having parents and children attend the same school concurrently. This approach not only promotes togetherness but also allows families to spend quality leisure time together, strengthening their bonds and creating lasting memories. Through this integrated learning strategy, the entire family can maximize their time with us, making the experience enriching and enjoyable for all.

COURSES	HOURS PER WEEK	AGE	NO. OF STUDENTS IN CLASS	STANDARD	HIGH
General English + Junior English	15 + 15	18+ & 5	12 + 1	480	575
General English Mini Group + Junior English	15 + 15	18+ & 5	6 + 12	630	-
Business English + Junior English	15 + 15	18+ & 5	6 + 10	630	740

*A1-B2 levels available for Junior Course. A1 - C2 levels available for Parent Courses.



Learning One-to-One English for Work

inlingua designed a Crash Intensity Programme as a crash course for people who need to improve their general or business English skills significantly and in a short time. Private lessons are designed around your needs and interests whilst you will be encouraged to get actively involved in the learning process.

COURSES	HOURS PER WEEK	AGE	NO. OF STUDENTS IN CLASS	STANDARD	HIGH	*ONLINE LEARNING MY.INLINGUA.COM
CIP General English 10	7.5	5+	1	300	350	220
CIP General English 20	15	5+	1	580	680	220
CIP General English 30	22.5	13+	1	840	990	220
CIP General English 40	30	13+	1	1000	1200	220
CIP Business English 30	22.5	18+	1	900	1050	220
CIP Business English 40	30	18+	1	1100	1300	220

*Continue learning after your stay by including my.inlingua: 3 months activation with course work + 10 online conversation lessons for €220

General English Combined

Maximize your learning at inlingua Malta with our course for rapid and effective results. Get 20 group lessons and 10 one-to-one lessons tailored to your specific needs. Achieve optimum language proficiency in no time.

COURSES	HOURS PER WEEK	AGE	NO. OF STUDENTS IN CLASS	STANDARD	HIGH	*ONLINE LEARNING my.inlingua.com
General English Combined	22.5	13+	10 + 1	500	570	220
Business English Combined	22.5	18+	10 + 1	625	695	220
Junior English Combined	22.5	5-12	10 + 1	535	600	220

*Continue learning after your stay by including my.inlingua: 3 months activation with course work + 10 online conversation lessons for €220



Teen Summer Programme

These programmes are all inclusive package programmes, a perfect choice for youngsters who want to improve their English but still enjoy a fun-packed holiday. Whether travelling to Malta with their family or independently, the following programmes are designed to ensure safety, learning and fun!

Totally Teens Package (Age 13-17) Available 15th June - 13th July 2024		Active Teens Package (Age 13-17) Available 15th June - 13th July 2024	
<ul style="list-style-type: none">• General English 20 Group course• Welcome and Information Pack• inlingua Course book• Host Family Accommodation on Full-Board Basis (3 meals a day)• Certificate upon course completion• Student Travel Insurance• Activity Programme (2 per day)• Group Guides and Leaders• Airport Transfers		<ul style="list-style-type: none">• General English 20 Group course• Welcome and Information Pack• inlingua Course book• Certificate upon course completion• Daily Lunch Pack• Student Travel Insurance• Activity Programme (2 per day)• Group Guides and Leaders• Airport Transfers	
1 week 700	2 weeks 1300	1 week 410	2 weeks 720

For teens travelling with family, we offer a pay-as-you-go option where teens may book a General English or Intensive General English course and choose to select and pay activities from the teen programme that they would like to attend (recommended for teens 16+)



2 Week Sample Programme

DAY	MORNING	AFTERNOON	EVENING
Sunday	Arrivals	Arrivals	Arrivals
Monday	Lessons	Malta 5D	Valletta
Tuesday	Lessons	Bugibba Beach	Teen Party
Wednesday	Lessons	Splash & Fun	Free Time
Thursday	Lessons	Paddle Boarding	Teen Party
Friday	Lessons	Bowling	St. Julians
Saturday	-	Full Day Gozo	Free Time
Sunday	Full Day Gozo	Popeye Village	Popeye Village
Monday	Lessons	Free Time	Mdina
Tuesday	Lessons	Esplora Sceintific Park	Teen Party
Wednesday	Lessons	Comino	Three Cities
Thursday	Lessons	Paddle Boarding	Teen Party
Friday	Lessons	Aquarium	Beach
Saturday	Free Time	Golden Bay	Golden Bay

This is a sample programme lessons and activity times may vary



Study Travel Groups

At inlingua, we extend a warm welcome to groups traveling together (with 10 persons or more) and offer an all-inclusive package customized to meet each group's specific requirements. Our packages encompass a comprehensive set of services, including the course itself, accommodation, inlingua course book, airport transfers, and enriching cultural visits.

We ensure affordability without compromising on quality. Our aim is to find the perfect price point for each group, ensuring that their needs and preferences are met with utmost satisfaction. Additionally, we appreciate the efforts of group coordinators and offer complimentary services as a gesture of gratitude for choosing inlingua as their language learning destination.

Join us at inlingua and experience a seamless and tailor-made language learning journey, fostering camaraderie and growth within your group while exploring the cultural richness of our locale. Let us make your group's language learning experience truly memorable and rewarding!





Academic Pathway Programmes



Authorised Exam Centre

Being an authorized Cambridge Exam Centre, inlingua Malta offers students the convenience of studying and taking the exam within the same school premises. This arrangement also ensures that our trainers are well-acquainted with the exam format, enabling them to effectively guide students in their preparation. Cambridge Exams are scheduled in March, June, August, and December for your convenience.



Cambridge Preparation in B2 First and C1 Advanced

The Cambridge logo, featuring the word "Cambridge" in white serif font inside a red arrow-shaped graphic pointing to the right.

English Qualifications

inlingua Malta serves as a hub for various ESOL exams, granting recognized English language qualifications accepted by educational institutions and employers globally. You have the opportunity to both prepare for and take these exams at our center.

Moreover, our intensive Cambridge Preparation 30 Course offers an immersive experience, blending General English practice and enhancement with tailored exam strategies for different exam types.

IELTS Exam Preparation Course

The IELTS logo, with the word "IELTS" in a bold, red, sans-serif font, followed by a small trademark symbol (TM).

IELTS is swiftly gaining prominence as a vital test for English language learners aiming to meet the requirements of UK and US universities. These institutions demand this qualification from specific SELT (Secure English Language Testing) centers like Cambridge IELTS.

inlingua Malta's IELTS Preparation 30 Course is designed to enhance both your General and Academic English skills while refining your IELTS Exam strategies throughout the day.

Exam Preparation Courses

COURSES	HOURS PER WEEK	RECOMMENDED AGE	RECOMMENDED LEVEL	START DATES	LENGTH	PRICE
Cambridge B2 First (FCE) Course	22.5	16+	B2	19th Feb 6th May 18th Nov	4 weeks	1100
				22nd Jan 8th Apr 16th Oct	8 weeks	2200
Cambridge C1 Advanced (CAE) Course	22.5	16+	C1	19th Feb 6th May 18th Nov	4 weeks	1100
				22nd Jan 8th Apr 16th Oct	8 weeks	2200
IELTS Group Course	22.5	16+	B2	Courses start every Monday	1 week 2 weeks 3 weeks 4 weeks 8 weeks	300 600 900 1100 2200
Exam Preparation One-to-One 30 (IELTS, Cambridge, TOEFL)	22.5	16+	B1- C1	Courses start every Monday	Flexible	840



Cambridge Exam Dates & Prices 2024

CAMBRIDGE EXAM PAPER-BASED EXAMS	EXAM DAY	CLOSING DATE FOR APPLICATIONS*	EXAM FEE	RESULT ISSUE WINDOW
Cambridge A2 Key (KET)	9th Mar 2024 6th Jun 2024 5th Dec 2024	26th Jan 2024 3rd May 2024 1st Nov 2024	175	9th Apr – 22nd Apr 2024 4th Jul – 17th Jul 2024 10th Jan – 23rd Jan 2025
Cambridge B1 Preliminary (PET)	9th Mar 2024 6th Jun 2024 5th Dec 2024	26th Jan 2024 3rd May 2024 1st Nov 2024	175	9th Apr – 22nd Apr 2024 4th Jul – 17th Jul 2024 10th Jan – 23rd Jan 2025
Cambridge B2 First (FCE)	15th Mar 2024 1st Jun 2024 22nd Aug 2024 14th Dec 2024	8th Feb 2024 5th May 2024 5th Aug 2024 6th Dec 2024	210	16th Apr – 29th Apr 2024 28th Jun – 11th Jul 2024 20th Sep – 3rd Oct 2024 20th Dec – 31st Jan 2025
Cambridge C1 Advanced (CAE)	16th Mar 2024 1st Jun 2024 23rd Aug 2024 7th Dec 2024	8th Feb 2024 5th May 2024 5th Jul 2024 1st Nov 2024	225	16th Apr – 29th Apr 2024 28th Jun – 11th Jul 2024 23rd Sep – 4th Oct 2024 13th Jan – 24th Jan 2025
Cambridge C2 Proficiency (CPE)	2nd Mar 2024 8th Jun 2024 5th Dec 2024	26th Jan 2024 3rd May 2024 29th Oct 2024	225	2nd Apr – 15th Apr 2024 5th Jul – 15th Jul 2024 10th Jan – 23rd Jan 2025

*Late entry Fee = €50 (Applications received and processed 2 week before the exam date = €70)

- All listed dates are subject to amendments by Cambridge Assessment – kindly confirm dates provided when booking your exam registration
- Even though Late Entries are accepted, inlingua Malta may refuse to accept applicants booking late due to the availability of exam materials.
- The speaking component for each exam may be held on a different date before or after the written papers.

Long Stay Programmes



Long Stay Programmes & Packages

For those students who want to reach optimal levels of English before moving to another English speaking country or following a desired University or College Programme, this course is ideal to develop the fluency in English to that of a native speaker. Throughout this long programme, students are monitored by their trainers and by means of progress tests as they move from one level to the next. Long stay programs often lead to achieving internationally recognized qualifications.

COURSES	HOURS PER WEEK	8 WEEKS+	12 WEEKS+	24 WEEKS+	32 WEEKS+	40 WEEKS+	48 WEEKS +	*ONLINE LEARNING my.inlingua.com
General English Long Stay	15	1440	2100	4080	5280	6400	7440	220
Intensive General English Long Stay	22.5	1680	2460	4800	6240	7600	8880	220

€30 Summer supplement per week between 3rd June - 30th August

*Continue learning after your stay by including my.inlingua: 3 months activation with course work + 10 online conversation lessons for €220



SMART Study Programmes

Offering flexible start dates, these course and accommodation packages are the perfect selection for students engaged in extensive study periods. They allow students to vary their daily study duration while working towards obtaining a globally recognized English Proficiency Qualification. The comprehensive package presents a single price covering all essential services. Students also have the option to Customize their package by selecting a combination of courses and incorporating accommodation services.

12 Weeks



Package Price includes: Intensive General English for 6 weeks, IELTS Course for 6 weeks, 2-Way Airport Transfers, First free inlingua Course Book, Welcome Pack and Student Discount Card + FREE SIM Card. Accommodation in a Shared Self-Catering Apartment (max 3 per room) (€38.50 High Season Supplement applies for Accommodation).

To sit for a Cambridge B2/C1 Exam and follow the Cambridge Preparation Course please select from the following dates:

- 18th Dec 2023, 11th March 2024, 27th May 2024, 16th September 2024
- Minimum required level: B1+

24 Weeks



Package Price includes: General English for 10 weeks, Intensive General English for 6 weeks, IELTS or Cambridge ESOL Course for 8 weeks, 2-Way Airport Transfers, First free inlingua Course Book, Welcome Pack and Student Discount Card + FREE SIM Card. Accommodation in a Shared Self-Catering Apartment (max 3 per room) (€38.50 High Season Supplement applies on Accommodation).

To sit for a Cambridge B2/C1 Exam and follow the Cambridge Preparation Course please select from the following dates:

- 4th September 2023, 11th December 2023, 29th January 2024, 24th June 2024
- Minimum required Level: A2+

32 Weeks



Package Price includes: General English for 14 weeks, Intensive General English for 10 weeks, IELTS or Cambridge ESOL Course for 8 weeks, 2-Way Airport Transfers, First free inlingua Course Book, Welcome Pack and Student Discount Card + FREE SIM Card. Accommodation in a Shared Self-Catering Apartment (max 3 per room) (€38.50 High Season Supplement applies on Accommodation).

To sit for a Cambridge B2/C1 Exam and follow the Cambridge Preparation Course please select from the following dates:

- 8th January 2024, 22nd April 2024
- Minimum required Level: A1+

48 Weeks



Package Price includes: General English for 24 weeks, Intensive General English for 16 weeks, IELTS or Cambridge ESOL Course for 8 weeks, 2-Way Airport Transfers, First free inlingua Course Book, Welcome Pack and Student Discount Card + FREE SIM Card. Accommodation in a Shared Self-Catering Apartment (max 3 per room) (€38.50 High Season Supplement applies on Accommodation).

To sit for a Cambridge B2/C1 Exam and follow the Cambridge Preparation Course please select from the following dates:

- 2nd January 2024
- Minimum required Level: A1+



Accommodation



Accommodation Matters

Staying with a Host Family

inlingua host families are chosen for the welcoming atmosphere in their home. If you choose this type of accommodation, you will learn Maltese customs and traditions, whilst rapidly improving your English through constant communication with your host family. This is a safe and secure options for young students and they can choose to sleep in a single or shared room, on Half or Full Board Basis.

PRICE PER PERSON PER NIGHT	BOARD BASIS	STANDARD	HIGH (1st June - 1st Sept)
Host Family Single Room	Half Board	45	55
	Full Board	50	60
Host Family Sharing Room	Half Board	31	42
	Full Board	41	50
Supplement	Dietary Request	20	20



St. Julians Self-Catering Budget Shared Apartments

Self-catering budget student accommodation, located centrally in the popular town of St. Julian's and is 20 minutes away from the school by bus. These shared apartments are situated around a large central courtyard with FREE Wifi in all rooms. All apartments enjoy twin rooms with ceiling fans, lounge area and kitchenette with basic cooking facilities, kettle, toaster and fridge. Weekly clean and linen change are provided. The use of a swimming pool is also available in high season.

Facilities include:

Self-catering apartment, Bed type – twin rooms, shared bathrooms, weekly cleaning, bed linen and towel are provided, fully-equipped kitchen with microwave, iron and ironing board, swimming pool & free WIFI.

ROOM TYPE	1 WEEK	8 WEEKS+	12 WEEKS+	24 WEEKS+	32 WEEKS+	40 WEEKS+	48 WEEKS +
Shared Apartment	139	1089	1404	2808	3744	4680	5616

High Season Supplement (1st June - 1st September)
1-11 weeks - €38.50per week | 12+ weeks €24.50 per week



inlingua Sliema Self-Catering Shared Apartments

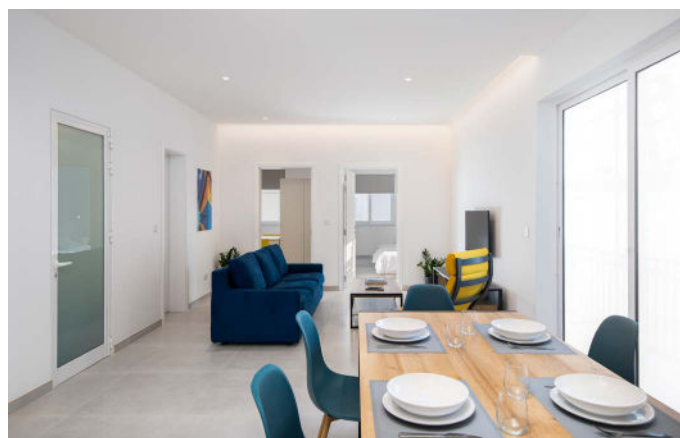
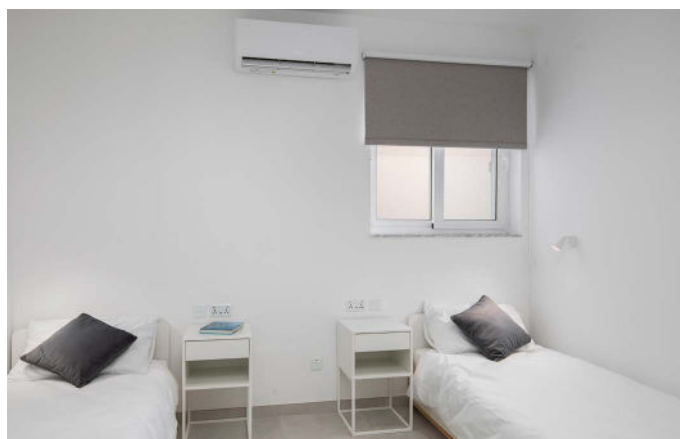
Located in Sliema a few minutes away from the school, the Sliema shared apartment option is perfect for adult students staying 4 weeks or longer and boast all that is required to have a long comfortable stay. Student will enjoy communal living in the form of triple rooms shared living, with shared kitchen and bathroom facilities. All apartments include laundry facilities and climate control.

Facilities include:

Self-catering apartment, Bed type – triple, shared bathrooms, cleaning twice weekly, bed linen is provide and changed weekly, towels are provided, laundry facilities, fully-equipped kitchen with microwave, iron and ironing board, accessibility to balconies, air-conditioning and free WIFI.

ROOM TYPE	1 WEEK	8 WEEKS+	12 WEEKS+	24 WEEKS+	32 WEEKS+	40 WEEKS+	48 WEEKS +
Shared Apartment	160	1240	1800	3600	4800	6000	7200

High Season Supplement (1st June - 1st September)
1-11 weeks - €43.00 per week | 12+ weeks €27.00 per week



Campus Hub

Campus Hub is located in the nearby student town of Msida, and is just a 25 minute bus ride from our school, Students can opt to choose different rooming options, to choose between different levels of privacy whether preferring private room options to more communal living spaces and rooms.

Accommodation is in the form of single rooms, twin rooms in a room cluster or shared apartments. A studio apartment option is also available

Cluster Apartments use the facilities of a Communal Kitchen and Lounge area. Students can choose a single room, a single room with an ensuite, a Twin Room or a Twin Room with an ensuite in a Cluster Apartment.

Shared Apartments offer their own kitchenette and relaxation area. Students opting for a Shared Apartment can choose a single room or a twin room in a shared apartment.

What's included?

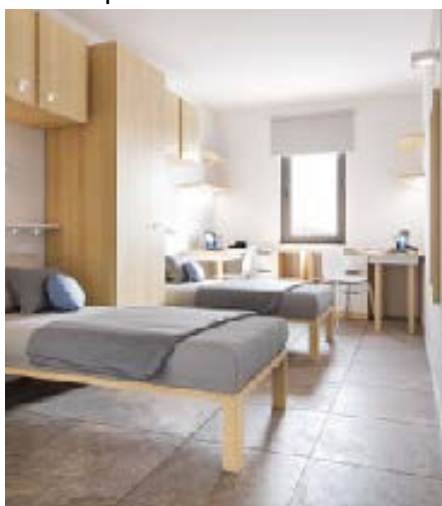
Bed linen and towel change weekly, fully functional kitchen, lounge area, wardrobe and study space, kitchenette, private bathrooms (en-suite or shared per 4 people), AC and climate control in room, check-in and check-out facility, 24/7 reception service, laundry facilities, pool facilities, student lounge & study lounge & free WIFI.

ROOM TYPE	1 WEEK	8 WEEKS	12 WEEKS+	16 WEEKS+	24 WEEKS+	32 WEEKS+	40 WEEKS +	48 WEEKS+
Twin Cluster Apartment with Shared Bathroom	188	1504	2058	2744	4116	5488	6860	8232

High Season Supplement (17th June - 31st August) €27.00 per week
Single rooms, Studio apartments & En-suite bathroom options are available on request



Single Room



Twin Room



Studio Apartment

Corner Boutique Hostel (Rates Starting from EUR 20 per night)

Corner Boutique Hostel is located in Sliema in one of the location's grand traditional Maltese houses. This charming boutique hostel offers comfortable and affordable living in a non-typical set up. Each bedroom sleeps max 4 people and offers ensuite bathroom facilities. A number of double rooms are also available. A large communal kitchen and living space is located on the lower floor together with manned reception area offering a number of services. The environment is buzzing and it is ideal for the young traveler visiting for 8 weeks or more!

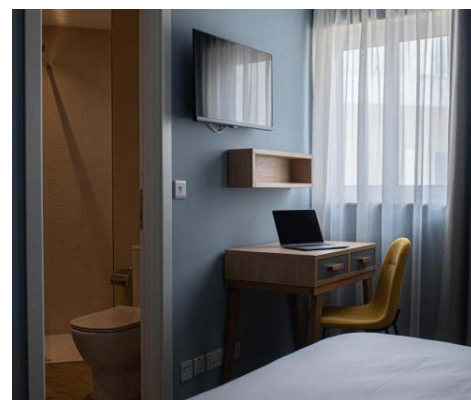
Facilities include: shared or single bedrooms all with ensuite bathrooms (bunk-beds or double beds available), check-in/check-out service, cleaning daily with a deep clean weekly, bed Linen and towels provided and changed weekly, laundry facilities available on site, fully equipped communal kitchen, Free WIFI.



Ta' Tereza (Rates Starting from EUR 60 per night)

This newly refurbished hotel in central Sliema just 10 minutes away from school boasts an excellent standard offering the independence and privacy of a small hotel. A number of rooming options offer modern facilities and furnishings all with an ensuite bathroom together with TV, air-conditioning and heating. Breakfast may also be included in the price options and may be enjoyed on the terrace.

Facilities include: Fully equipped rooms, breakfast, ensuite bathrooms, daily housekeeping, sun terrace, free WIFI, reception services, air-conditioning, ironing service.



Hotel Accommodation

Preluna Hotel (Rates starting from EUR 80 per night)

Set on the Sliema promenade this hotel is located 5 minutes away from the school and features both on-site and off-site facilities. Spread over 12 floors, spacious guest rooms offer great sea views whilst its central location means everything is a few minutes away. Recommended for the business traveler or families.

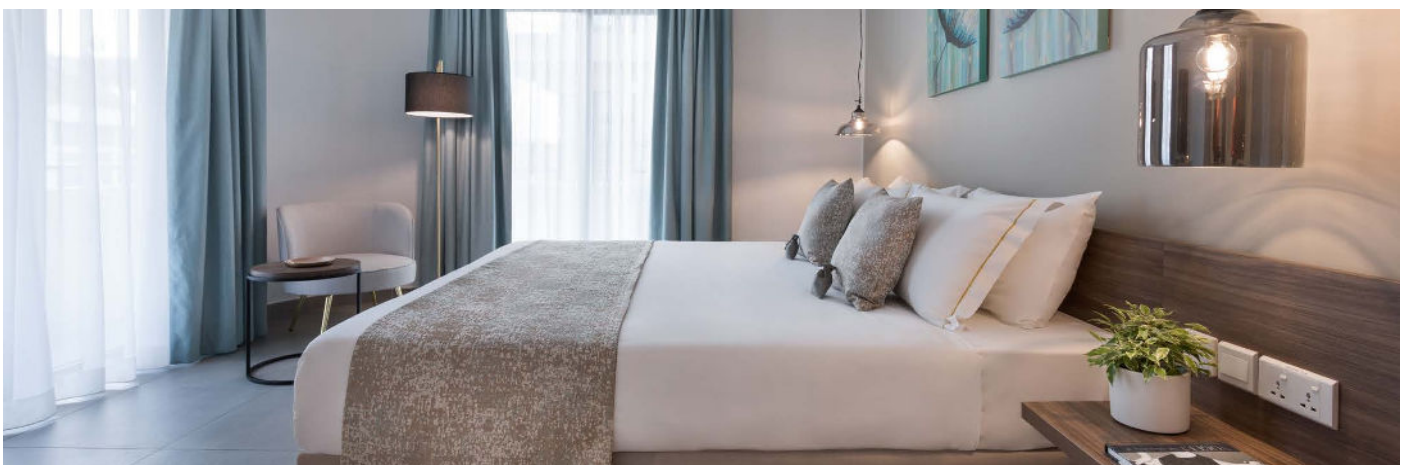
Facilities include: Private beach club, fitness and wellness spa, free WIFI, 4 restaurants, 3 bars, swimming pool, all air-conditioned rooms, tea/coffee making facilities, satellite TV and private bathrooms.



1926 Hotel and Spa (Rates starting from EUR 130 per night)

Situated in the heart of Sliema, this hotel is just a corner away from the school. It is the statement of lean luxury and modernity with its remarkable Beach Club just 200 m away it is ideal to combine learning, with luxury living and relaxation by the water's edge.

Facilities include: Variety of room types including family rooms, private bathrooms, balconies, tea and coffee making facilities, ironing facilities, fitness room, air-conditioning, swimming pool, WIFI and work stations in each room.



ST Bayview, St Blubay and St Azur Hotel (Rates starting from EUR 65 per night)

All properties are located 15 minutes away from school and are situated in the buzzing center of Sliema and Gzira on the promenade, the location is ideal for connecting to all parts of the island. Accommodation consists of aparthotel style rooms as well as regular hotel guest rooms.

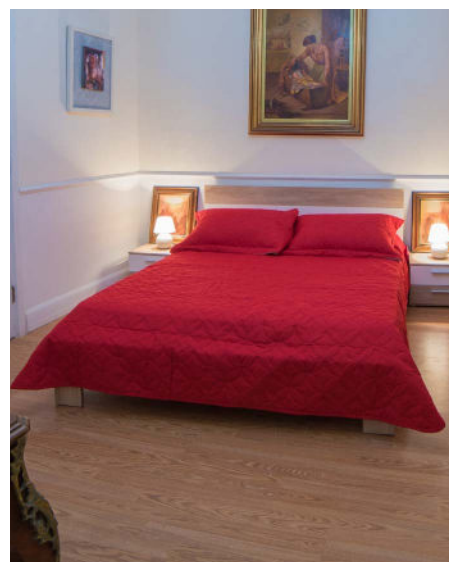
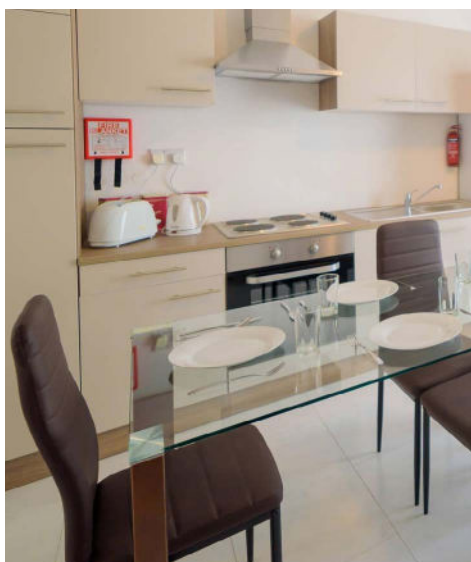
Facilities include: Variety of room options, aparthotel style rooms, seaview or inland rooms, swimming pools and lido, air-conditioning, free WIFI, breakfast and full-board options available.



Family Apartments (Rates starting from EUR 80 per night)

These apartments are located within the vicinity of the school and are ideal for families who wish to travel together for a number of weeks but would like the independence of living in a self-catering apartment. Fully equipped with all that is required for a comfortable stay, families can opt to choose a one-bedroom or 2 bedroom apartment.

Facilities include: Fully-equipped kitchens, cleaning and laundry facilities, self-check-in, climate control in bedrooms, private bathrooms and living spaces. Free WIFI.



Social Activity Programme

inlingua Malta offers learners the possibility to not just practice English in class, but also whilst having fun. Activities are run exclusively for learners of English travelling to Malta and a weekly programme is set 4 indicating price, meeting point, and duration of activity.

Our exciting programme offers something for families as well as individual adult learners and can be pre-booked before arrival or directly at the school reception.

Learners also benefit from discounts by presenting their inlingua student card at different outlets, a reduced rate at the gym as well as free entrance at the inlingua beach club



Airport Transfers

inlingua Malta offers its students an airport transfer service. Our driver will meet you at the airport to take you to your chosen accommodation in Malta. The transfer service will also pick you up upon departure to take you to the airport.

PRICE PER PERSON	1 PERSON	2 PERSONS	3 PERSONS	4 PERSONS
	50	25	20	17

Take Note



Non-Refundable Fees

Registration: €45
 Visa Assistance: €45
 Student Insurance:
 €12.00 per week (Multi-Risk)
 €15.00 per week (Multi-Risk & Cancellation)



What's included

Online Placement test www.inlingua-pot.com, Certificate upon completion of course, Welcome Pack, Wi-Fi, Student Discount Card, Online Registration - www.inlingua-malta.com/registration-form/

Opening Hours

Standard Season
 Monday - Friday 0830 - 1700
 High Season
 Monday - Friday 0830 - 1730



Required Course Books

Junior English Book: €40
 General English: €30
 Business Book + CD: €45
 Exam Course Book: €50



Information

High Season: 1st June - 1st September 2024
 Lessons are held in the mornings and afternoons
 1 Lesson: 45 minutes
 Class Size: Maximum 12
 Courses Start: Every Monday



Cambridge Exams 2024

FCE Exam Fee: €210
 15th March, 1st June, 22nd August, 14th December
 CAE Exam Fee: €225
 16th March, 1st June, 23rd August, 7th December
 CPE Exam Fee: €225
 2nd March, 8th June, 5th December

Terms & Conditions

Payment Terms

Upon confirmation of booking and receipt of invoice, 25 % deposit must be made by Bank Transfer, Credit Card or Secure Online Payment via Flywire as follows: Balance to be settled 3 months prior to arrival date.

From 3 months prior to arrival date:

Full payment within seven (7) days of confirmation of booking.

BANK TRANSFER: Payment together with Bank charges on receipt of invoice. Bank details provided on invoice and listed below.

ONLINE PAYMENT: Pay securely through the link listed at the bottom of your invoice www.inlinguamalta.flywire.com. Failure to comply with our payment terms will result in the cancellation of your application.

All fees are to be settled before the enrolment start date and no student will be allowed to start their course until full payment has been received

Cancellation Fees/Refund Policy

In the event that you cancel your booking the following refunds will apply:

For cancellations 30 days prior to course or accommodation start date (whichever comes first) inlingua will refund fees received as listed below less non-refundable charges. (Registration fees - Visa assistance, Medical insurance fees if applicable - Administration charges)

30 days prior to arrival date - Full refund (excluding non-refundable charges/ *cancellation fees for accommodation)

14 days prior to arrival date - 75% of invoice (excluding non-refundable charges/ *cancellation fees for accommodation)

7 days prior to arrival date - 50% of invoice (excluding non-refundable charges/ *cancellation fees for accommodation)

3 days prior to arrival date - 25% of invoice (excluding non-refundable charges/ *cancellation fees for accommodation)

Cancellation 2 days prior to arrival and "no shows" - no refund

*Hotel Accommodation - cancellation 1 month prior to arrival - no refund

Upon quote, Host Family Accommodation will only be made available for the first 48 hours following a request.

In cases of illness or holidays planned through the duration of the course, the head of school needs to be informed. Lessons missed for this reason will not be replaced or refunded.

Postponements

Course postponements less than 30 days before start of course will be made at a charge of €100.

Accommodation postponement are charged a fee according to the supplier in question.

Double Banking

inlingua Malta reserves the right to adapt a double-banking system whereby students may have a varied time-table in which lessons are delivered either in the morning or in the afternoon.

Visas

Students travelling on a VISA must plan ahead and check with their local Maltese representation with regard to timings for VISA application.

inlingua Malta will issue a Confirmation letter, a ProForma invoice and a Letter of Acceptance for Visa application upon full payment.

There is a charge of €35 for Visa assistance. Any additional cost incurred should documents be sent by courier are to be borne by the student

Cancellations after VISA refusal

Any cancellations due to VISA refusals must be made in writing and communicated to info@inlinguamalta.com within three (3) days of receipt of the refusal document sent by the issuing Embassy/Authority. In the event of a refusal the following cancellation charges apply:-

7 days prior to arrival - 3 days host family/ Residence accommodation/ full stay hotel accommodation + *non-refundable charges Less than 7 days prior to arrival - 1 week tuition + 1 week host family/Residence accommodation/ full stay hotel accommodation + *non-refundable charges*

(*Non-Refundable Charges include registration/Visa Assistance/Courier/Admin fees).

Cancellations or shortening of courses after Visa has been issued No refunds are granted to students failing to arrive or who are absent during their course. Periods of absence are not compensated with free extensions at the end of the course. In the case of students being granted a visa, non-arrivals, late arrivals and periods of absence will be reported to the immigration authorities. For all other reasons, cancellations must be made in writing and the following cancellations charges apply:-

Between 1 - 21 days prior to arrival date - 4 Weeks tuition and accommodation fees, Registration Fee and Admin charges will be retained.

For no-shows, or cancellation or shortening of courses after arrival date - no refund will be given.

Postponement of courses

In the event that, between 14-21 days prior to course start date the entry visa application approval is still pending students can opt to postpone their course to a later starting date within the current year against a fee of €145. On confirmation of Visa approval, cancellation policies above apply.

In case of visa not being granted after full and correct application, students may opt to file an appeal with the appeals court

Local Government Taxes

inlingua Malta will not be held responsible for any additional taxes introduced by the Maltese Government through 2024 and these, if any, must be borne by the student.

Take Your Test Online - Before You Arrive

Adult students are to complete the online placement test at www.inlingua-pot.com before your arrival - failure to do so will mean completing the test on the first day of school resulting in the possible loss of the first 2 lessons. No refund will be offered for these missed lessons. Junior students (5 - 12 year olds) will be sent a digital test but may also be tested on their first day of school, or placed according to age group

Courses/Books/Reduced Lessons

inlingua Malta will endeavor to provide reserved courses in full. For courses in which not enough participants are registered, inlingua Malta will offer a suitable alternative equivalent to the courses booked or convert course credit to one-to-one lessons. This information will be communicated to the student, 7 days in advance.

Under no circumstance are course fees transferable to a 3rd party. Credit towards courses must be utilised within the same year.

Where only 1 or 2 apply for an exam preparation course, inlingua will apply a reduced hour procedure in which 30 lessons will be reduced to 20 lessons.

Attendance

In order to receive a certificate of attendance students must attend a minimum of 80% of lessons scheduled. Students whose attendance falls below this level may be asked to leave the programme. Students travelling on a visa who fall below the required attendance level will be reported to the immigration authorities.

Child Supervision/Travelling

Unaccompanied Minors

Students booking Junior Courses travelling with accompanying adults are supervised during school hours.

Unaccompanied minors aged between 13-14 years travelling on their own must contact their airline for clarification and pay stipulated unaccompanied minor's fees (if applicable) when booking their flight tickets. Minors who have not filled in an unaccompanied minor form and paid relevant charges will NOT be allowed to travel. Proof of payment must be provided on confirmation of booking.

An airport supervision charge of €40 per way must be added for unaccompanied minors wherein an inlingua representative will meet on arrival/check-in the minor student and wait with the student prior to handing over to an airline representative prior to the departure flight. This policy is being imposed by various airlines and clarification prior to travelling is ESSENTIAL.

Eco Contribution Tax

All local and foreign guests at the age of 18 years or older, staying at any type of accommodation, are required to pay an Environment Contribution. The rate is that of €0.50 per night up to a maximum of €5 (10 nights +); for each continuous stay in the Maltese Islands including Gozo. This contribution applies for hotels, guesthouses, hostels, self-catering apartments, B&Bs and host families.

Parent/Guardian Consent Form - Students under 18

It is imperative that the Parent/Guardian Consent Form sent by our Sales Department on application of booking is duly filled and signed by Parent/Guardian. inlingua Malta cannot take responsibility regarding the well-being of students under 18 travelling unaccompanied without the relevant form in hand.

Customer Care & Student Assistance

The inlingua Malta team is freely available to assist students and deal with all circumstances during their stay. Feedback forms are available at reception. If at any time a student is unhappy with any aspect of their course, accommodation or leisure activities they may opt to bring this to our attention either verbally or in writing. inlingua Malta will not accept any complaints after a student's stay in Malta has ended; unless communicated as detailed above.

Code of Conduct

Dismissal Policy: inlingua Malta expects that all students are well-motivated, polite and considerate towards members of staff, host-families and fellow students at all times. inlingua reserves the right to exclude/expel a student from a programme/course in the event of misconduct within the school/place of accommodation/elsewhere. Stipulated curfew imposed on students living within a host family must be adhered to. Failure to abide by local laws and regulations could also result in expulsion. In the case of expulsion no refunds will be given. Should a student be sent back home extra travelling costs are borne by the student.

Host Families Arrivals /Departures

Students lodged at Host Family should arrive at the Host Family between 11:00 and 23:00 and depart before 15:00. Students staying at a host family should make sure that their luggage and personal belongings are packed and their room is vacated if their departure time is after 15:00. Should students want to benefit from facilities or meal plans outside the suggested arrivals and departures times this should be agreed upon on confirmation of flight details and extra nights will be charged accordingly.

Host Family Curfew Times

Students staying with a Host Family are asked to respect curfew times. Students between the ages of 13 and 15 are to be home at 22:00. Student between 16 and 17 should be home before 00:00.

Transfers

In order for inlingua to provide an efficient airport transfer service, all flight details must be received in full (i.e. Flight number, Arrival and Departure time, Airline and point of origin) no later than 7 days prior to arrival. If not provided 7 days prior to arrival, students will not be entitled to a refund in the case of missed transfers. Airport transfer fees include a maximum of 1 hour waiting time. In the event of a flight delay exceeding 1 hour, students will be charged an additional €15 per hour pro rata on their first day at school.

Photography, Filming & Sound Recording

During the course of a student's stay, the School may arrange to record, photograph or shoot video footage for its promotional purposes only, both printed and online. Any student who does not wish to participate should express this and indicate at the time of recording, photographing or video shooting the wish not to participate.

Public Holidays

1st January, 10th February, 19th March, 29th March, 31st April, 1st May, 7th June, 29th June, 15th August, 8th September, 21st September, 8th December, 13th December, 25th December - Some and not all of the lessons that fall on public holidays during week days will be made up during the rest of the week.

Insurance/Liability

Students must have adequate health, accident and travel insurance while attending any of our programmes. It is recommended that all personal belongings such as cameras, iPod, iPads, laptops and other valuables are insured prior to arrival. This should be obtained from your country of residence. inlingua Malta will not be held liable for loss, damage or injury to persons or property. Student insurance, compulsory for students below the age of 18, can be purchased from inlingua Malta prior to arrival. We recommend that students prepare a photocopy of their passport or ID card prior to their arrival in Malta.

Leisure Programme

ilingua Malta reserves the right to make changes to the leisure programme due to weather conditions or any other reasons beyond our control. No refunds nor changes can be made on pre-paid activities included in our programmes.

Long stay Packages

Students booking courses of a duration of 8 weeks or more are not entitled to a refund or course credit in case of them cancelling their course, accommodation or any other ancillary service booked during their stay. Long-stay students who are NOT travelling on a VISA may opt to take a total of 1 week holiday per 8 week course stay which may be extended to accommodate the full course weeks. Any additional holiday weeks added are automatically lost and are not refundable. In order to avail of this service, the student must first inform the sales or academic department. In such cases, inlingua does not guarantee continuity in course syllabus.

Force Majeure

ilingua Malta will not be responsible for any failure to comply with any of its obligations (and therefore shall not be required to provide any compensation) if the failure is occasioned by any cause beyond inlingua's reasonable control; nor shall inlingua be held responsible for any costs incurred by or on behalf of the student as a result of any such cause. Such causes shall include but shall not be limited to war, threat of war, riot, civil strife, industrial dispute, terrorist activity, natural or nuclear disaster and unusually adverse weather conditions.

PAYMENT DETAILS

Kudos Ltd

Branch: HSBC p.l.c. High Street, Sliema
SLM 1549, Malta

IBAN No: MT08 MMEB 4406 0000 0000 0625 6218 001

Account Number: 006 256218 001

Swift Code: MMEBMTMT

Sort Code: 44060

CONTACT DETAILS

ilingua School of Languages

Address: 92, Tigne Towers, Tigne Street, Sliema, Malta

VAT Registration No: MT 2573-0022

Website: www.ilinguamalta.com

E-mail: info@ilinguamalta.com

Tel: +356 2010 2000



inlingua Malta
92, Tigne Towers
Tigne Street
Sliema SLM 3172
Malta

T +356 2010 2000

info@inlinguamalta.com

www.inlinguamalta.com

